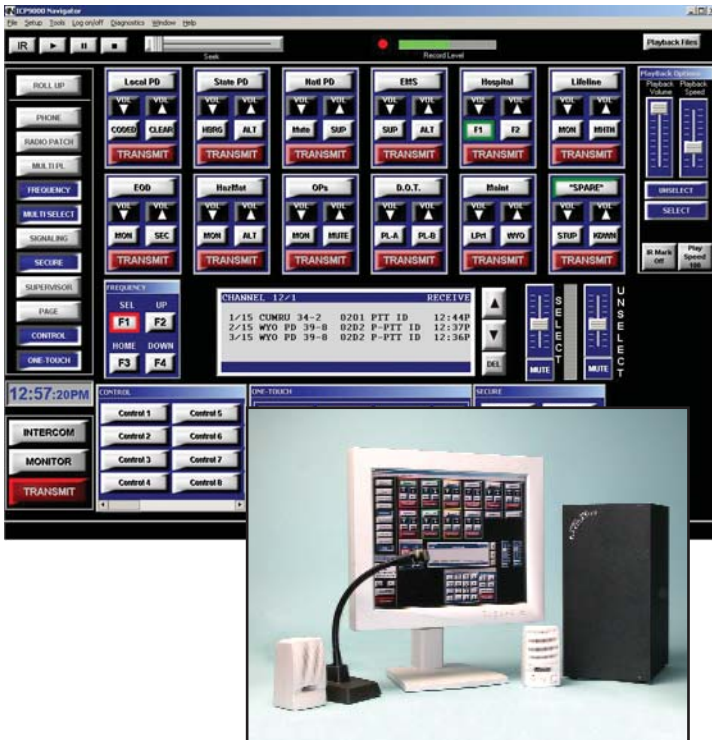


### Features



PC and Monitor Purchased Separately

### Applications

- Police, Fire, Ambulance
- Utilities, Taxis, Airlines
- Forestry, Parks, Recreation
- Industries, Municipalities, Construction
- Security and Public Safety

- Graphical User Interface with Custom Profile Settings
- Touch-screen, Wand, or Mouse Operation
- Available in 4, 8, and 12 Channel Control
- 4 Channel Expansion Kits Support System Growth
- 16 - Frequency Control / Channel
- 10 (minimum) Consoles per System
- Supports Tone, DC, and E&M Control Types
- Stack Paging
- Multi-Channel Sequential Group Paging
- Alert Page
- Paging Encoder for Individual or Group Paging
- DTMF Decode for Automatic Number Identification
- Full Duplex Telephone Interface Capability
- Select Channel Volume Control
- Adjustable Alert and Paging Tones
- Enhanced Multi-Tasking Operation
- 24-Hour Clock
- Supports Headset, Gooseneck Desk Mic, and Footswitch
- Easy to use Windows® - based Programming Application
- Audio Output to Logging Voice Recorder
- Enhanced User Customization
- VU Meter
- Hot Standby Paging
- Instant Recall Recording (IRR) Option
- Output Control Option
- One-Touch / Quick-Touch Paging
- Programmable Function Keys
- MDC1200 Option

The **ICP9000 NAVIGATOR Series Console** is a stand-alone dispatch console that provides all the features and functionality of our popular ICP9000 series desktop consoles in a modern Graphical User Interface (GUI) format. All pushbutton and indicator functionality is located on an interactive computer display supporting touch-screen or mouse operation.

The ICP9000 NAVIGATOR Master Control Unit (MCU) can be neatly stored beneath a desk, on a wall, or in an electronics rack. Each unit is capable of controlling up to twelve (12) conventional base radios, and a system will support a minimum of ten (10) Navigator console positions (one MCU per position). The unit is available in 4, 8, or 12 channel configurations and is easily expandable to meet future needs. The unit is field-programmable using GAI-Tronics' Windows®-based CARD Suite application software (included in XAC4000A Programming Bundle). This software provides smooth navigation and programming and is backward compatible with similar consoles.

The GAI-Tronics NAVIGATOR's flexibility allows dispatchers to move icons and color-code radio channels to create and save unique user settings. Unused or idle channels can be "rolled up" to hide the control buttons for that channel, and the paging keypad will only be displayed when active. Other infrequently used controls can be hidden until ready for use.

The ICP9000 NAVIGATOR is feature rich and provides the dispatcher with complete system control. The dispatcher can choose single or multiple channels to transmit and receive audio. The audio is routed to volume controlled select and unselect speakers (left and right PC speakers). The unit always includes DTMF Decode, Paging Encode and 16-frequency control per channel as standard features.

In addition to the ICP9000 NAVIGATOR's standard features, a variety of options and field install kits are available to provide enhanced control of the radio system. These options provide the unit with DC control, Telco interface, E & M signaling, supervisory control for priority conversations, telephone interface, and battery revert to prevent downtime during a power outage. An Instant Recall Record Option is also available to provide one-touch replay of the last 20 seconds of receive audio. Finally, an Output Control Option is available to provide discreet control of up to 32 open-collector outputs. Hands-free microphone accessories such as headset, desk microphone, and footswitch are also available.

The ICP9000 NAVIGATOR works in conjunction with standard GAI-Tronics Tone (ITA2000A) and DC (IDA1000A) adapters. A single adapter is placed local to the radio and can control up to 10 consoles.

Note: The ICP9000 Navigator supports the use of MDC-1200/ STAT ALERT (Removal of logging recorder output module required). The MDC1200 option can be factory-installed or is available as a field-install kit.

