



GAI-TRONICS® CORPORATION
A HUBBELL COMPANY

Model 478-002 Centra-Page Desktop Subset

General Information

This data sheet applies to the Model 478-002 Centra-Page Desktop Subset. GAI-Tronics Centra-Page systems feature centrally-located electronics for environmental protection and unitized amplification. Standard Centra-Page cabinets can support up to 30 handset stations, and in most cases, up to 60 speakers. Alarms and telephone interfacing can be added to Centra-Page systems.

The Model 478-002 Desktop Station is used for paging and party-line communications, and is equipped with a push-to-page handset and party-line selector.

Although there is no absolute limit on the number of stations in use on a given intercom path (party line 1 or 2) for a conference call, the effectiveness of the sidetone rejection circuit and overall system performance diminish when four or more stations are connected together. It is therefore recommended that “conference” call party line conversations be limited to four simultaneous users.

Model 478-002, like the other Centra-Page station models, corresponds to a plug-in PCBA located in the central card rack assembly. The Model 69037-101 Line Cards are sold and shipped separately from this station. The card contains the handset dc power source, dual switching relays, and a 16-watt speaker amplifier with 8-ohm and 70-volt line outputs.

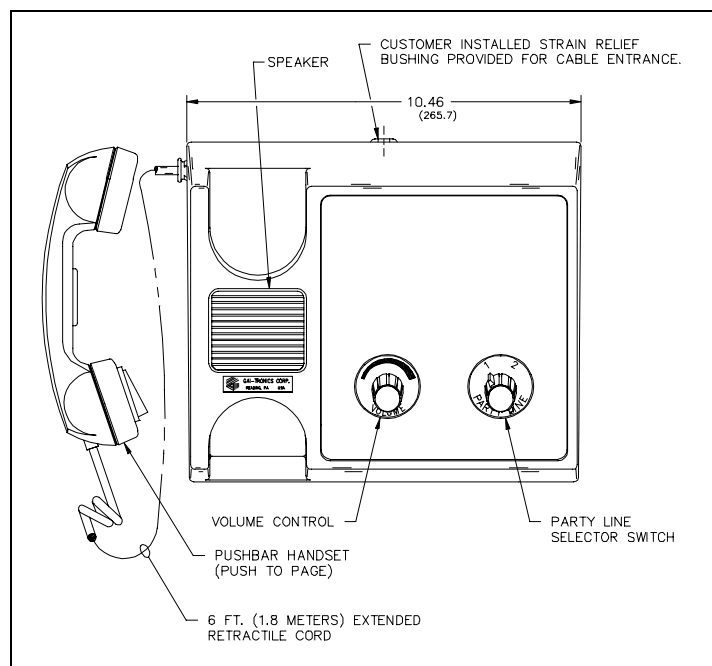


Figure 1. Model 478-002 Centra-Page Desktop Subset Outline

Specifications

Electrical

Handset:

Microphone.....	10 ohms; pressure differential, noise-canceling dynamic
Receiver	150 ohms; high-efficiency dynamic, hearing-aid compatible
Cable	Retractable, 6-foot (1.82 m) extended, PVC
Material	Light gray ABS
Control.....	Pressbar (push-to-page) switch
Frequency response.....	200–2000 Hz, ± 3 dB
Distortion	Microphone input to receiver output 2 % (nominal line level @ 1 kHz)
Sidetone rejection.....	14 dB (nominal line level @ 1 kHz)
DC line current	Handset: 8 mA typical

Mechanical

Construction/finish:

Housing.....	Light gray ABS
Front panel and base.....	16 gauge CRS with black polyurethane enamel finish
External controls.....	Rotary party line selector, integral speaker volume control
Connections	Internal, screw-type barrier terminal block
Integral speaker	3 sq. in., 45-ohm, 4-watt, moisture-proof, shielded magnetic pole piece
Temperature range, operating.....	-22° F to +140° F (-30° C to +60° C)
Dimensions.....	9.35 L \times 10.46 W \times 4.81 H inches (237.5 \times 265.7 \times 122.2 mm)
Shipping weight	5 lbs.
Approvals.....	None